

CHSLD Docteur-Aimé-Leduc

80 rue du Marché, Salaberry-de-Valleyfield
450-373-4818



Number of floors: **4** | Residents: **181** | Private rooms: **115** (beds) | Semi-private rooms: **66** (beds)

Missions

- **139** long-term care beds
- **16** beds in the prosthetic unit
- **6** palliative care beds
- **20** intensive functional rehabilitation beds

Visitors

- Visitor parking with permit available via rue Du Marché. Request your permit at reception.
- No electric vehicle charging station.
- Visitors allowed at any time.
- The main doors are locked from 8 p.m. to 7 a.m. During these hours, ring the bell and someone will unlock the door.
- You may leave your personal effects (boots, coat, bag, etc.) in your loved one's room.

Services and amenities

- If you would like more space or privacy with your loved one for a family activity, you may book a room with the receptionist. There is a break room on the ground floor with coffee and vending machines. **(\$)***
- The dining room on the ground floor is open from 11:30 a.m. to 1:30 p.m. if you wish to eat with your loved one.
- Daily menus and prices are posted at the entrance to the dining room. **(\$)***
- Loved ones must label the resident's clothing.

Physical premises

- The reception desk is located on the ground floor, at the top of the stairs.
- There is a smoking room reserved for residents on the ground floor.

Family message board

At the main entrance, next to the elevator, and on all living units, you will find a family message board with useful information such as:

- Calendar of recreational activities
- Monthly newsletter
- Information about the residents' committee
- Information about the Fondation du Centre Dr-Aimé-Leduc

Hairdresser and barber (\$)*

- The hair salon on the ground floor is open Wednesdays and Fridays by appointment. To make an appointment, please call ext. **373162**.
- A barber visits once every 6 weeks on a pre-set schedule. Please call ext. **373000**

Television, Internet and telephone (\$)*

- You may sign up for a standard or customized TV package from our provider.
- The family may sign up for phone service with the provider of their choice.
- There is no Wi-Fi available, except in palliative care.

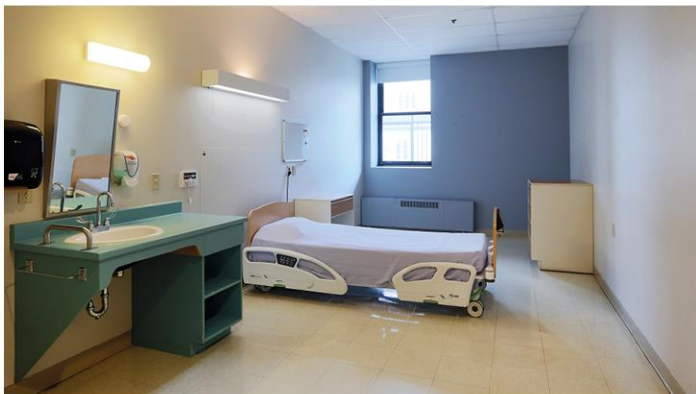
* **(\$) = Paid service**



Reception



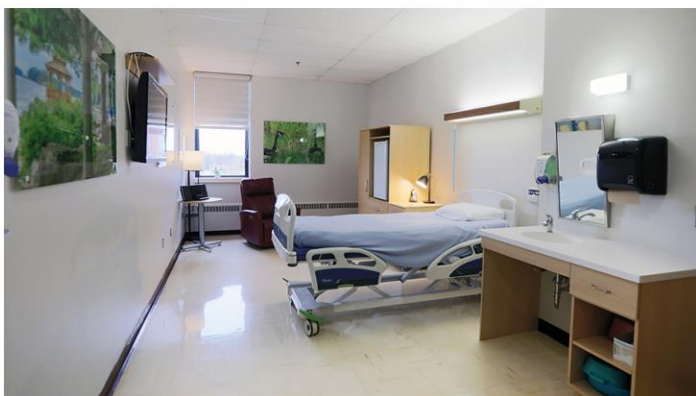
Main dining room



Room



Common room



Palliative care room



Family room on palliative care unit



For more information:
scan the **QR code**
or call **450-373-4818, ext. 0.**



Exterior